

KWETB

FET

ezine



QA Portal



2026



BORD OIDEACHAIS AGUS OILIÚNA
CHILL DARAGUS CHILL MHANTÁIN
KILDARE AND WICKLOW
EDUCATION AND TRAINING BOARD

In this issue...

Governance of Quality

FET Results Approvals
Quality Team Milestones 2025
QA Portal launch
LDAs Process
AltutUDE Charter



News & Achievements

KWETB launches New Level 6 Special Purpose Award:
Hairdressing & Commie Chef Apprenticeships
Wider Benefits of Learning Research
Staff Retirements



Important Dates & Updates

Submission dates 2026
FESS Calendar
ETBI Digital Library updates
QQI 2025 Certification Data



Governance of Quality





FET Results Approvals

Summary of Grades submitted for February 2026 Certification

Field of Learning	Successful	Distinction	Merit	Pass	Total
Core, Languages and General Studies	59	8		1	68
ICT		21	3		24
Education, Health, Wellbeing		78	55	12	145
Microqualifications	8				8
Business Administration		57	19	5	81
Sports, Science, Services, Horticulture		24	1		25
Art, Craft & Design					
Engineering					
Total:	67	188	78	18	351

FE Certification in FE for February 2026 certification period

The first Results Approval Panel meeting for Further Education was held on 4th February. Results were approved for the February certification period, with nine centres submitting a total of 351 learner portfolios for approval. A range of grades were achieved, including successful at levels 2 and 3, and Distinction, Merit and Pass grades across programmes at levels 3,4,5 and 6.

February marks the first of six certification periods of 2026, and we are currently working on estimates for April certification.

Congratulations to all learners on their achievements and to the tutors and centre staff for their dedication and hard work in ensuring these successes.

Training Services Approvals February 2026

F12's	Portfolios
Pastry Baking & desserts	6
PLC based Analog Automation	7
Security Skills	8
Industrial Pneumatics	5
Planning change in the workplace	11
Understanding conflict management in the workplace	8
Phase 2 Farrier	88
For Mention	
Intro to Accounts	30
Intermediate Accounts	21
Intro to Payroll	30
Advanced Payroll	21
Advanced Accounts	15
Total Number of F12's: 12	250



QQI have published their certification data for 2025

Click below to view QQI's interactive dashboards, where you can easily explore dynamic visuals of certification data.




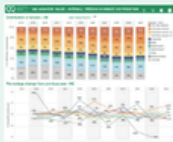






 Dearbhú Cáilíochta agus Cáilíochtaí Éireann
Quality and Qualifications Ireland

TABLE OF CONTENTS

Select a thumbnail to navigate to a dashboard

- Overall Trends**

- Overall Trends - Detailed**

- Grades**

- Gender & Age**

- Education & Training Boards**

- Top 50 Awards**

- Providers & Centres**

- Apprenticeships**

- Local Authority & Provision**


Quality Assurance Team

Key Milestones 2025

Policy

Conducted Quality Framework Review 2025

Procedures Reviewed

1.3.2 Information to Learners about Assessment

1.3.3 Planning, Conducting and Concluding Assessment



New Policies Reviewed

Learner Engagement in Assessment and Assessor Grading of Learner Effort

2.2.8 Repeat of Assessment

Monitoring and Reporting Quality Management within Centres

KWETB Policy: The Use of Generative Artificial Intelligence (AI) in Teaching and Learning

New Policy & Procedure Development

2.2.8 Repeat of Assessment

Learner Engagement in Assessment and Assessor Grading of Learner Effort

Monitoring and Reporting Quality Management within Centres

Development of **Blended Learning Action Plan** and
Blended Learning
Application to QoI



Rialtas na hÉireann
Government of Ireland



Arna chomhchistiú ag
an Aontas Eorpach
Co-funded by the
European Union



BORD OIDEACHTAIS AGUS OILKHA
CHILL DARA AGUS CHILL MHNÁIN
KILDARE AND WICKLOW
EDUCATION AND TRAINING BOARD

Programme Development

L6 Specific Purpose Certificate in Customer Experience Design for Business (Validated)

Embedded Programmes:

Certificate in Customer Experience and Business Strategy
Certificate in Design Thinking for Business Innovation
Certificate in Embedding Organisational Resilience



L5 Specific Purpose Certificate in Building Resilience for Customer Relations (Evaluation in Progress)

Recently Validated Micro-Qualifications

PG26644 Level 4 Specific Purpose Certificate in Introduction to Artificial Intelligence

PG26645 Level 5 Specific Purpose Certificate in Enhancing Productivity with AI

PG26618 Level 6 Specific Purpose Certificate in Using Robotics in Advanced Manufacturing Plus embedded programmes :

- **PG26646 Certificate in Fundamentals of Robotics**
- **PG26651 Certificate in Robotics Fundamentals and Application**
- **PG26652 Certificate in Robotics Fundamentals and Integration**
- **PG26655 Certificate in Robotics Fundamentals and Robot Programming**
- **PG26656 Certificate in Robotics Fundamentals, Development & Trends**



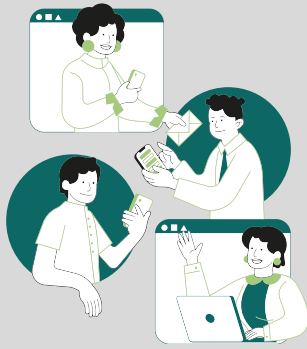
Rialtas na hÉireann
Government of Ireland



SOLAS
learning works



Communication



Development and Launch of central Quality Assurance Portal.

Development of QA team Vision and Mission Statements.

Upgrade of QA team website - Link Quality Framework AF, policies, governance structure, vision and mission statements and have regular updates.

Continue to maintain active participation with ETBI/Quality Network forum to advance strategic initiatives for programme review and development.

Continuous engagement with internal and external stakeholders

Support

Launch of Quality Framework & Learner Handbook.

Developed CAS revised modules Communities of Practice.

CAS Review and launch of revised CAS modules.

Ongoing ELC Community of Practices



Rialtas na hÉireann
Government of Ireland



Arna chomhchistiú ag
an Aontas Eorpach
Co-funded by the
European Union

SOLAS
learning works



BORD OIDEACHAIS AGUS OILÚNA
OILL DARA AGUS OILL MHAINTÁIN
KILDARE AND WICKLOW
EDUCATION AND TRAINING BOARD

Inclusion



The AltitUDE Charter launched by Ahead and adopted by KWETB

The Maturity Model Reasonable Accommodations in FET Project currently being developed in KWETB

EDI Policies in FET being reviewed and developed

The QA team took part in the IHREC Public Sector Duty Training in EDI

Sustainability



Formation of FET Centre Green Teams across KWETB

Launch of SOLAS Green Skills Implementation Plan

Roll out of Green Skills Induction course (Youthreach)



Rialtas na hÉireann
Government of Ireland



Arna chomhchistiú ag
an Aontas Eorpach
Co-funded by the
European Union

SOLAS
learning works



BORD OIDEACHAIS AGUS OILIONA
CHILL DARU AGUS CHILL MHAINTÍN
KILDARE AND WICKLOW
EDUCATION AND TRAINING BOARD

Launch of the KWETB Quality Assurance (QA) Portal

Last week the KWETB Quality Assurance (QA) Portal, our centralised platform designed to strengthen compliance, transparency, and communication across KWETB FET was launched. This portal based in MS Teams provides staff with secure, up-to-date access to validated programme information, policies, quality assurance documentation, and supports that underpin the delivery of high-quality, learner-centred education.

All content is aligned with QQI standards and the KWETB Single Quality Assurance Framework, ensuring that governance requirements are applied consistently across all centres. The QA Portal will be reviewed on a regular basis to ensure it continues to effectively support work across the FET sector.

The Quality Team also leads KWETB's work in Erasmus, Inclusion, and Sustainability. The portal reflects this wider remit by providing current information, resources, and updates in these areas. Regular updates, along with QA developments and governance communications, will continue to be shared through the KWETB Ezine, which is accessible via the portal.

Access to the Programme Approval Hub, Revised CAS modules, and information on Communities of Practice is available through this Team.

Developed as a practical, easy-to-access communication tool for Coordinators, Managers, Principals, and designated staff, the QA Portal brings together programme validation details, approval processes, quality assurance documentation, and key governance references in one central location.

Thank you for your continued commitment to quality. I hope you find the QA Portal a valuable resource that supports your work and enhances communication across the FET sector.

Brenda Lynch
Quality Manager



QA Portal
KWETB Quality Team

NEW LOCALLY DEvised ASSESSMENT (LDA) CLAIM PROCESS

The Quality Assurance Team is delighted to announce that a new email address has been created for the submission of LDA claims for FET.

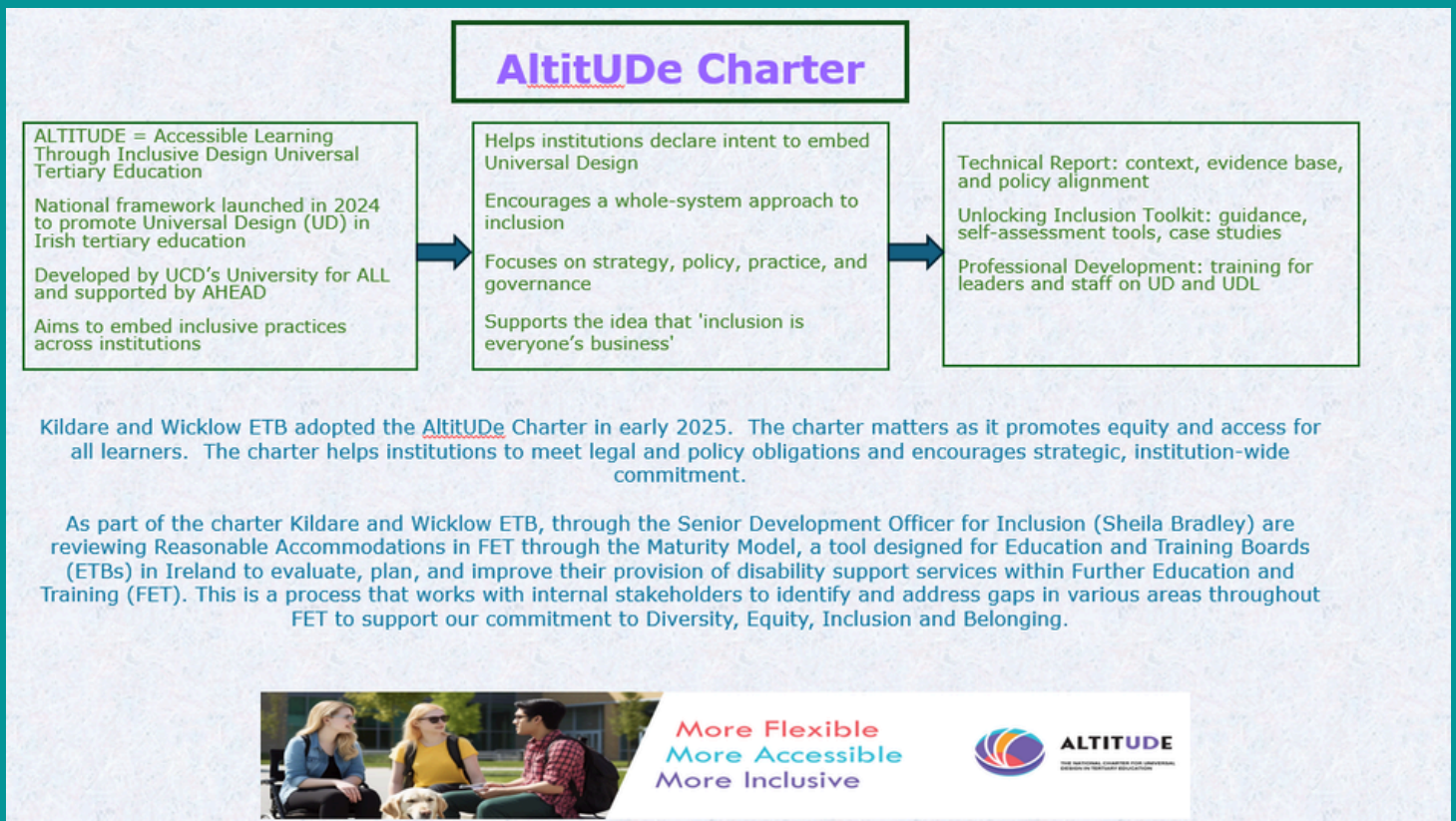


From February, the email address FETLDAClaims@KWETB.ie is now the single point of contact for all FET claims-related submissions and queries.

All other usual LDA claim processes continue to apply.

If you have any queries in this regard please contact AislingForan@KWETB.ie.

AltitUDE



For more information on the AltitUDE Charter
Contact SheilaBradley@KWETB.ie

NEWS & ACHIEVEMENTS



KWETB launches New Level 6 Special Purpose Award: Specific Purpose Certificate in Customer Experience Design for Business

KWETB has developed an innovative new QQI validated Special Purpose Award at Level 6, the Specific Purpose Certificate in Customer Experience Design for Business (CX). This 15-credit programme is designed to strengthen business capability, enhance customer centred innovation and build organisational resilience in an evolving economic landscape.

This programme is delivered under Skills to Advance and was developed collaboratively by SOLAS and industry partners, following extensive research across four key sectors, financial, healthcare, retail and hospitality.

Developed by the KWETB Training Team, with support from the Quality Assurance Team, this programme reflects KWETB's continued commitment to high quality, industry aligned learning that responds to emerging employer and workforce needs.

PROGRAMME STRUCTURE:

The Special Purpose Award comprises of three embedded 5-credit modules, each of which can be taken individually or combined to achieve the full 15-credit award.

1. Certificate in Customer Experience and Business Strategy (5 credits)
2. Certificate in Design Thinking for Business Innovation (5 credits)
3. Embedding Organisational Resilience (5 credits)

ASSESSMENT APPROACH:

- Each module includes 25 hours classroom learning + 25 self-directed learning.
- Assessments consist of 100% project work, with each learner completing a workplace-related project.
- All assessments have been designed to reflect real world business practice.

BENEFITS FOR EMPLOYERS:

- **Improved Customer Experience (CX):** employees better understand customer expectations and deliver consistent, high quality interactions.
- **Stronger Communication:** Employees develop confidence, empathy and conflict resolution skills that improve team and customer relationships.
- **Increased Innovation:** Design thinking tools help employees identify issues, propose solutions and support continuous improvement.
- **Enhanced Organisational Culture:** Promotes leadership behaviours, accountability, inclusion and trust.

QUALITY ASSURANCE AND GOVERNANCE PROCESS

- The programme underwent a robust development and validation process to ensure it meets the highest standards of quality assurance.
 - The Training Team led the programme design, with structured support from the Quality Team to ensure compliance with QQI requirements and KWETB QA policies.
 - The Programme progressed through the full internal governance, securing approval from the Programme Governance Subgroup and the Quality Council.
 - An independent online review panel evaluated the Programme, providing both recommendations and conditions, all of which were addressed in full.
 - The Programme was then submitted to QQI's Programme and Awards Executive Committee (PAEC), where it received full QQI approval for delivery.
- This comprehensive process ensures that the programme is robust, industry aligned and fully compliant with QQI standards.

NEXT STEPS: PILOT AND NATIONAL ROLLOUT

KWETB Training Services will now pilot the programme, working closely with employers, learners and staff to refine deliver and gather feedback.

Following successful implementation, the programme will be made available to other ETBs nationally through the QQI differential validation process. KWETB is the Lead ETB with responsibility for the ongoing review and oversight of the programme.



Rialtas na hÉireann
Government of Ireland



Arna chomhchistiú ag
an Aontas Eorpach
Co-funded by the
European Union



BORD OIDEACHAIS AGUS OILIONA
KILDARE AGUS WICKLOW
EDUCATION AND TRAINING BOARD

CAS review - Supports for rollout of the 27 revised modules

TEAMs Channel

Is now available at Revised Modules CAS | QA Portal | Microsoft Teams, the channel will continue to share all communications around the CAS revised modules in its new home.

In the 'Posts'

All updates around the Revised modules and the supports available will be communicated here e.g.

ETBI UPDATES

Oct 2025

Dear [Revised CAS Modules](#) TEAM members

ETBI have shared some updates to the modules listed here. Updated Module descriptors and relevant appendices are in the files tab. Kindly share these updates with relevant staff.

Title	Module Descriptor – changes
Special needs assisting level 5	revised number 1.2 Oct <ul style="list-style-type: none">2025:Section 6 SVR updatedAdded to Supervisors report<ul style="list-style-type: none">Professionalism and Work EthicAdded to Marking sheet<ul style="list-style-type: none">Teamwork and CollaborationPersonal Qualities/Skills
Special needs assisting level 6	revised number 1.1 Oct 2025 <ul style="list-style-type: none">Marking SheetPersonal qualities/skills added
Work Experience L5	revised number 1.1 16/10/25 Appendices B-D <ul style="list-style-type: none">Correction to rubric statement
Work Experience L6	revised number 1.1 29/09/25 <ul style="list-style-type: none">MIMLO 5 moved from Skills Demo to COW revised number 1.2 16/10/25 <ul style="list-style-type: none">Correction to Rubric statement
Training Needs Identification and Design L 6	revised number 1 May 25 (no change to module descriptor) Appendix B- p.16 Appendix C- p.3

The 'Shared' tab remains the same where you will find

The resources for each of the updated modules, these are available to download and share locally. Each subject folder contains:

- Updated Module Descriptor
- Teaching and Learning Resources
- Sample Assessment and Associated rubrics for information
- Video presentation on the updated module

Current Frequently Asked Questions (FAQ) were last updated 13th February. Terms of Reference for the Communities of Practice were agreed on the 27th of November 2025

COMMUNITY OF PRACTICE

Based on feedback received Communities of Practice were established to support the rollout of the revised CAS modules. The Terms of Reference were determined in line with KWETB Quality Assurance vision and mission with the support from [ETBI Digital Library- Communities of Practice](#). Please see [Revised Modules CAS | QA Portal | Microsoft Teams](#) for the Terms of reference.

There are 27 revised CAS modules, and these were divided under 2 broad headings in the hope that staff may meet others delivery similar disciplines as themselves. The 2 communities of practice are Humanities/Fitness and Administration/Business, with smaller groups in breakout rooms that allow for more detailed conversation and sharing under specific modules or NFQ level.

To date 3 sessions have taken place

- 27th November 2025 – agreed terms of reference and discussed inclusion
- 22nd & 29th January 2026 – discussed the role of MIMLOs in revised modules, and subject related delivery e.g. Communications and Information Technology skills
- 24th February – considered the National Framework of Qualifications levels of Knowledge, skills and competencies, and the mapping of the MIMLOs in assessment.
- Further resources discussed

[Home - ETBI FET Digital Library](#)
[Further Education Support Service](#)

Attendees of these sessions have contributed, questioned and shared their knowledge, concerns and support of each other. The next session is planned for the 14th of April, and invites will be issued to Principals, Coordinators, and Managers shortly. All are welcome to attend and continue our Quality Assured conversations to support the delivery of the revised modules.

We are pleased to announce the availability of three new special-purpose awards

PG26644 LEVEL 4 SPECIFIC PURPOSE CERTIFICATE IN INTRODUCTION TO ARTIFICIAL INTELLIGENCE

AWARD CODE: 4S22963 FET CREDITS – 5 DURATION -PART-TIME – 4 MONTHS

This Level 4 Special Purpose Award (SPA) is designed for learners from all backgrounds. It provides foundational knowledge, skills, and competencies in Artificial Intelligence (AI). The programme introduces essential AI concepts, practical applications, and ethical considerations, while supporting the development of problem-solving abilities.

PG26645 LEVEL 5 SPECIFIC PURPOSE CERTIFICATE IN ENHANCING PRODUCTIVITY WITH AI

AWARD CODE: 5S22965 FET CREDITS – 5 DURATION – PART-TIME – 3 MONTHS

This Level 5 Special Purpose Award (SPA) is designed for individuals who are currently in employment. Learners will explore how GenAI tools operate and contemplate how these tools could be strategically applied to solve real-world problems, automate routine tasks, and drive innovation within their organisations. The programme also encourages learners to consider the legal, ethical implications of using these technologies. Challenges in relation to AI, such as data privacy, fair use and bias will be explored and simple strategies to mitigate these risks will be developed.

PG26618 LEVEL 6 SPECIFIC PURPOSE CERTIFICATE IN USING ROBOTICS IN ADVANCED MANUFACTURING

AWARD CODE: 6S21965 FET CREDITS – 30 DURATION – 5 MONTHS

This Level 6 Special Purpose Award (SPA) in Robotics is designed for individuals in employment. The programme structure comprises 5 modules, four of which are worth a credit value of 5 credits and one which has a credit value of 10 credits. The 5 modules have been developed with various manufacturing operations in mind including but not limited to business verticals such as Aerospace, Metal Fabrication, Lifesciences, Warehousing and Logistics, Plastics, Automotive, Pharma, Electronics and Food and Drink sectors. The completion of this programme will enable learners to develop the knowledge, skills, and competences required to work with robotics in an advanced manufacturing environment.

Equally meaningful was the Commis Chef graduation ceremony, which honoured apprentices who successfully completed their rigorous training and assessments. The ceremony recognised their dedication, long hours, and growing mastery of culinary foundations. Applause filled the room as each graduate stepped forward to receive well-earned recognition for their hard work. Tutor Laurence Richards was also acknowledged for his ongoing support and commitment to their development. Many of the graduates expressed gratitude for the mentorship, hands-on experience, and industry exposure that prepared them for thriving careers in professional kitchens. Their success stories served as an inspiring reminder of the transformative impact that high-quality apprenticeships can have on individuals, communities, and the hospitality sector.



Reflecting on the event, Training Services Manager, Eileen Cullen captured the essence of the day:

“The one theme that hit me straight away was mentorship and influence.

You talked about confidence, belief, resilience, all those life skills that shape who you become.

Surround yourself with good people, people you look up to and can learn from, because you all said it yourselves, you learn by doing.”



The combination of both hairdressing artistry and culinary accomplishment made the gala truly unique. Guests were treated not only to visual spectacle, but also to a sense of unity between two vibrant apprenticeship pathways. The shared celebration highlighted the diverse but equally valuable contributions that skilled professionals bring to Ireland's service industries. It was a night that celebrated craftsmanship in its many forms—whether shaping hair with creativity or preparing food with precision.

The “black and glam” theme elevated the event to another level. Attendees embraced the style enthusiastically, adding an extra layer of elegance to the evening. Lawlors Hotel provided the perfect ambience and a layout that complemented the flow of the ceremony and showcase. The overall result was an event that felt polished, professional, and deeply meaningful for everyone involved.

Ultimately, the gala was a tremendous success—not only as a celebration of achievements, but as a reflection of what apprenticeship education can accomplish. It honoured dedication, talent, and resilience, while shining a spotlight on the future of Ireland's hairdressing and culinary industries. It was a night filled with pride, creativity, and joy, leaving all attendees inspired and looking forward to what these graduates will achieve next.





Welcome to the Wider Benefits of Learning

The importance of the wider benefits of learning cannot be underestimated. Educators witness every day the growth, confidence, and engagement of learners. Until now, however, these valuable outcomes have not been formally measured.

The Wider Benefits Tool enables education programmes to quantify the benefits of learning that are not reflected in certification, helping to capture the full impact of educational experiences.

We are delighted to support this initiative and look forward to rolling it out over the coming months. We will provide question & answers sessions to support your teams with this initiative with the first of those scheduled for March 5th at 15.00. Please do not hesitate to get in contact should you have any questions"

For further information contact:

Karin Walker & Patricia Dalton



Recent Retirements in KWETB

*KWETB would like to thank all of our
recent retirees for their service
throughout the years, and the very best
for the future!*

THANK YOU

Tina Campbell

Imelda Carroll

Éilís Clare

Deirdre Gallagher

Annette Mangan



You can read more about a
recent event held for our 2025
retirees here:

In Recognition of KWETB's
Recent Retirees



Blessington and Baltinglass FETC recently held a get together to say farewell to Annette Mangan, who retired recently.

Here is what they had to say:

Cheers to Annette – 28 Years of Heart, Humour, and Adult Learning

On 5 February, staff from right across KWETB hit the roads – some armed with umbrellas, others with tissues – to gather and celebrate a very special moment: Annette’s retirement after an amazing 28 years in the Adult Basic Education Service.

Annette has been a standout colleague from day one. Whether she was supporting a learner through their first steps back into education or guiding a new tutor she did it with patience, kindness, and that trademark Annette wit. Many of us still believe she could calm a storm simply by walking into the room.

Over nearly three decades, she was a mentor, a cheerleader, a problem-solver, and a fierce advocate for adult learners. She made sure everyone felt welcome, capable, and valued. She also somehow knew the answer to everything.

The send-off was filled with stories, laughter, warm wishes, and only a few attempts to convince her to stay “just one more year.” But Annette is off on a new adventure now – travel, travel and more travel.

From all of us across KWETB: Annette, thank you for your years of dedication, your humour, and your heart. We’ll miss you terribly – and yes, we’ll still be ringing you when we can’t find things.

Enjoy every moment of your retirement. You’ve earned it

Important Dates & Updates



FESS PD Calendar Spring/Summer 2026



Recent updates to the ETBI FET Digital Library



Summer ezine submission date 14th May

**BORD OIDEACHAIS AGUS OILÜNA
CHILL DARÁ AGUS CHILL MHTÁIN
KILDARE AND WICKLOW
EDUCATION AND TRAINING BOARD**

KWETB FET!

**THE QUALITY ASSURANCE TEAM
WANT TO HEAR FROM YOU**

SUBMIT YOUR E-ZINE ARTICLE HERE

2026 submission deadlines
Spring - 19th February
Summer - 14th May
Autumn - 10th September
Winter - 19th November

For more information contact AislingForan@kwetb.ie